

**PLEASE CHECK WWW.MOLEX.COM FOR LATEST PART INFORMATION**

**Part Number:** [0430610012](#)  
**Status:** **Active**  
**Overview:** [spox](#)  
**Description:** 3.96mm (.156") Pitch SPOX™ Housing, 12 Circuits

**Documents:**

[3D Model](#) [RoHS Certificate of Compliance \(PDF\)](#)  
[Drawing \(PDF\)](#)

**Agency Certification**

CSA LR19980  
 UL E29179

**General**

Product Family Crimp Housings  
 Series [43061](#)  
 Overview [spox](#)  
 Product Name SPOX™

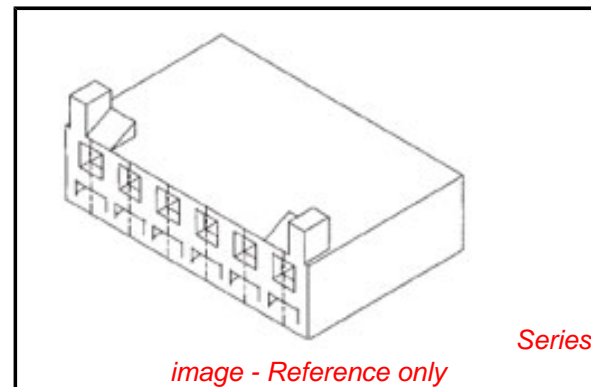
**Physical**

Breakaway No  
 Circuits (maximum) 12  
 Circuits Detail 12  
 Color - Resin Natural  
 Flammability 94V-0  
 Gender Female  
 Glow-Wire Compliant No  
 Keying to Mating Part None  
 Lock to Mating Part Yes  
 Material - Resin Polyester  
 Number of Rows 1  
 Packaging Type Bag  
 Panel Mount No  
 Pitch - Mating Interface (in) 0.156 In  
 Pitch - Mating Interface (mm) 3.96 mm  
 Polarized to Mating Part Yes  
 Stackable No  
 Temperature Range - Operating 0°C to +75°C

**Material Info**

**Reference - Drawing Numbers**

Packaging Specification PK-43061-001  
 Sales Drawing SD-43061



**EU RoHS**

**ELV and RoHS Compliant**  
**REACH SVHC Contains SVHC: No**  
**Halogen-Free Status**

**China RoHS**



**Not Halogen-Free**

**Need more information on product environmental compliance?**

Email [productcompliance@molex.com](mailto:productcompliance@molex.com)  
 For a multiple part number RoHS Certificate of Compliance, [click here](#)

Please visit the [Contact Us](#) section for any non-product compliance questions.

**Search Parts in this Series**

[43061Series](#)

**Mates With**

(.156") Pitch SPOX® Housing, 12 Circuits

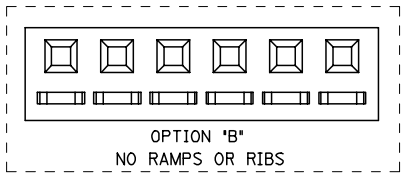
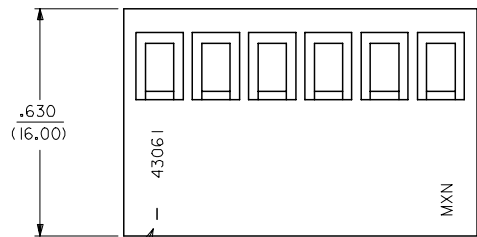
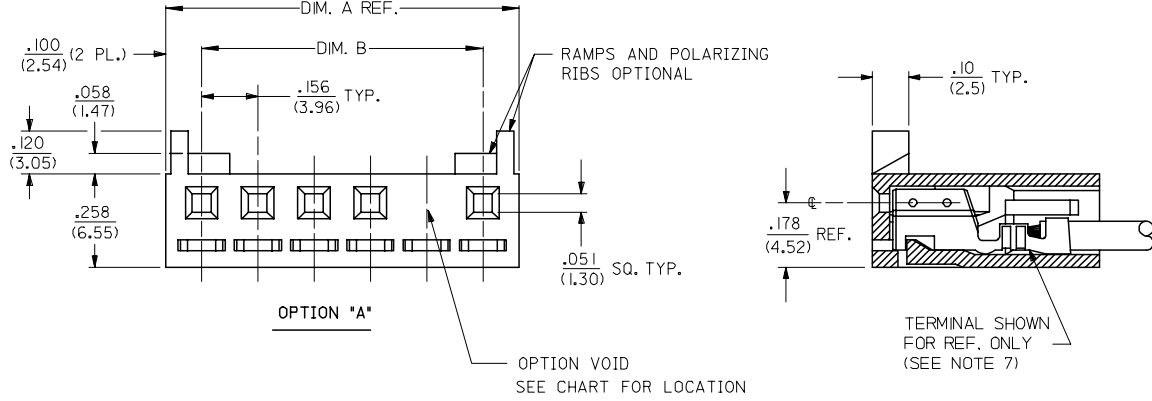
**Use With**

3.96mm (.156") Pitch SPOX™ Housing

NO. OF CKTS.	DIM. A	DIM. B
2	.357 (9.06)	.156 (3.96)
3	.513 (13.02)	.312 (7.92)
4	.669 (16.98)	.468 (11.88)
5	.824 (20.94)	.624 (15.84)
6	.980 (24.90)	.780 (19.80)
7	1.136 (28.86)	.935 (23.76)
8	1.292 (32.82)	1.091 (27.72)
9	1.448 (36.78)	1.247 (31.68)
10	1.604 (40.74)	1.403 (35.64)
11	1.760 (44.70)	1.560 (39.60)
12	1.916 (48.66)	1.715 (43.56)

NOTES:

- 1) MATERIAL: GLASS FILLED POLYESTER, 94V-0  
MATERIAL NUMBERS 43061-0\*\*\* : COLOR - NATURAL  
MATERIAL NUMBERS 43061-1\*\*\* : COLOR - BLACK  
MATERIAL NUMBERS 43061-2\*\*\* : COLOR - BLUE
- 2) FINISH: SEE TERMINAL DWGS.
- 3) FOR ADDITIONAL HOUSING INFORMATION REFER TO DWG. NO. 5195 OR P.S. 5195.  
FOR ADDITIONAL TERMINAL INFORMATION REFER TO DWG. NO. 5194 OR 5225, OR P.S. 5194 OR 5225.
- 4) PACKAGING SPECIFICATION: PK-43061-001
- 5) MATES WITH .156/(3.96) CENTER HEADERS AND .045/(1.14) SQUARE PINS.
- 6) CONNECTOR IS DESIGNED FOR USE WITH 18-28 AWG WIRE.
- 7) HOUSING IS DESIGNED FOR USE WITH 5194 (18-22 AWG) AND 5225 (24-28 AWG) TERMINALS.
- 8) THIS PART CONFORMS TO CLASS B REQUIREMENTS OF COSMETIC SPECIFICATION PS-45499-002.



CIRCUIT 1

2	F3
1	F3
SHT. REV.	

<b>UPDATE NOTES</b> EC NO: UCP2007-1205 DRAWN/PRI/DDR 2007/01/16 CHKD:ADERR 2007/01/18 APPR:FSM TH 2007/01/19 REV DESCRIPTION	QUALITY SYMBOLS ▽=0 ▽=0	GENERAL TOLERANCES (UNLESS SPECIFIED) <table border="1"> <thead> <tr> <th></th> <th>mm</th> <th>INCH</th> </tr> </thead> <tbody> <tr> <td>4 PLACES</td> <td>± .---</td> <td>± .---</td> </tr> <tr> <td>3 PLACES</td> <td>± .---</td> <td>± .010</td> </tr> <tr> <td>2 PLACES</td> <td>± 0.25</td> <td>± .014</td> </tr> <tr> <td>1 PLACE</td> <td>± 0.35</td> <td>± .---</td> </tr> </tbody> </table> ANGULAR ±1/2°		mm	INCH	4 PLACES	± .---	± .---	3 PLACES	± .---	± .010	2 PLACES	± 0.25	± .014	1 PLACE	± 0.35	± .---	DIMENSION STYLE IN/MM	SCALE 4:1	DESIGN UNITS INCH	THIRD ANGLE PROJECTION
		mm	INCH																		
	4 PLACES	± .---	± .---																		
	3 PLACES	± .---	± .010																		
2 PLACES	± 0.25	± .014																			
1 PLACE	± 0.35	± .---																			
DRAWN BY ROBERTS		DATE 1991/10/17		TITLE SPOX .156/(3.96) RECEPTACLE HOUSING																	
CHECKED BY PATEL		DATE 1991/10/17		APPROVED BY LENZ																	
MATERIAL NO. SEE CHART		DATE 1991/10/17		MOLEX INCORPORATED DOCUMENT NO. SD-43061																	
DRAFT WHERE APPLICABLE MUST REMAIN WITHIN DIMENSIONS		SIZE C		SHEET NO. 1 OF 2																	

HOUSING OPTION: A			HOUSING OPTION: A			HOUSING OPTION: A			HOUSING OPTION: B			HOUSING OPTION: B			HOUSING OPTION: B		
COLOR WHITE			COLOR BLACK			COLOR BLUE			COLOR WHITE			COLOR BLACK			COLOR BLUE		
NO. OF CKTS	MATERIAL NO	VOID LOC	NO. OF CKTS	MATERIAL NO	VOID LOC	NO. OF CKTS	MATERIAL NO	VOID LOC	NO. OF CKTS	MATERIAL NO	VOID LOC	NO. OF CKTS	MATERIAL NO	VOID LOC	NO. OF CKTS	MATERIAL NO	VOID LOC
2	4306 I-0002		2	4306 I-1002		2	4306 I-2002		2	4306 I-0013		2	4306 I-1013		2	4306 I-2050	
3	4306 I-0003		3	4306 I-1003		3	4306 I-2003		3	4306 I-0014		3	4306 I-1014		3	4306 I-2051	
4	4306 I-0004		4	4306 I-1004		4	4306 I-2004		4	4306 I-0015		4	4306 I-1015		4	4306 I-2052	
5	4306 I-0005		5	4306 I-1005		5	4306 I-2005		5	4306 I-0016		5	4306 I-1016		5	4306 I-2053	
6	4306 I-0006		6	4306 I-1006		6	4306 I-2006		6	4306 I-0017		6	4306 I-1017		6	4306 I-2054	
7	4306 I-0007		7	4306 I-1007		7	4306 I-2007		7	4306 I-0018		7	4306 I-1018		7	4306 I-2055	
8	4306 I-0008		8	4306 I-1008		8	4306 I-2008		8	4306 I-0019		8	4306 I-1019		8	4306 I-2056	
9	4306 I-0009		9	4306 I-1009		9	4306 I-2009		9	4306 I-0020		9	4306 I-1020		9	4306 I-2057	
10	4306 I-0010		10	4306 I-1010		10	4306 I-2010		10	4306 I-0021		10	4306 I-1021		10	4306 I-2058	
11	4306 I-0011		11	4306 I-1011		11	4306 I-2011		11	4306 I-0022		11	4306 I-1022		11	4306 I-2059	
12	4306 I-0012		12	4306 I-1012		12	4306 I-2012		12	4306 I-0023		12	4306 I-1023		12	4306 I-2060	
5	4306 I-0030	3	5	4306 I-1030	3	7	4306 I-2013	3,4,6									
7	4306 I-0031	4	7	4306 I-1031	4	7	4306 I-2014	3,6									
9	4306 I-0032	5	9	4306 I-1032	5												
8	4306 I-0033	7	8	4306 I-1033	7												
9	4306 I-0034	7	9	4306 I-1034	7												
5	4306 I-0035	4	5	4306 I-1035	4												
8	4306 I-0036	2															

E  
D  
C  
B  
A

J  
I  
H  
G  
F  
E  
D  
C  
B  
A

<b>SEE SHEET ONE</b> EC NO: UCP2007-1205 DRAWN BY: JDDER 2007/01/16 CHKD: ADERR 2007/01/18 APPR: FSM TH 2007/01/19 REV:	QUALITY SYMBOLS = 0 = 0	GENERAL TOLERANCES (UNLESS SPECIFIED)		DIMENSION STYLE IN/MM		SCALE 4:1	DESIGN UNITS INCH	THIRD ANGLE PROJECTION		
		4 PLACES	± ---	± ---	DRAWN BY	DATE	TITLE SPOX .156/(3.96) RECEPTACLE HOUSING			
		3 PLACES	± ---	± ---	CHECKED BY	DATE	MOLEX INCORPORATED			
		2 PLACES	± ---	± ---	PATEL	1991/11/06	MATERIAL NO. SD-43061 DOCUMENT NO. SHEET NO. 2 OF 2			
1 PLACE	± ---	± ---	APPROVED BY	DATE	DRAFT WHERE APPLICABLE MUST REMAIN WITHIN DIMENSIONS SEE CHART					
ANGULAR ±1/2°			LENZ 1991/11/06		THIS DRAWING CONTAINS INFORMATION THAT IS PROPRIETARY TO MOLEX INCORPORATED AND SHOULD NOT BE USED WITHOUT WRITTEN PERMISSION					